

Tenda



TEG1016D

16-Port Gigabit Ethernet Switch

Link
More



TEG1016D

16-Port Gigabit Ethernet Switch

Products Description

TEG1016D is a 16-port gigabit Ethernet switch independently designed by Tenda. The switch supports wire-speed forwarding of all ports to ensure smooth transmission of large files and video streaming. It features a compact metal body, and supports desktop, wall and rack mounting. As a flexible and simple-to-use device, it can be connected to such network devices as computers and network cameras. It is your ideal choice for video surveillance and wired networking in such scenarios as SMBs, communities, factories, and schools.

Key Feature

- Compliant with IEEE802.3, IEEE802.3u, IEEE802.3ab, IEEE802.3x
 - 16 10/100/1000 Base-T Ethernet ports
 - 8K MAC address and MAC address automatic learning
 - IEEE 802.3x full-duplex flow control and half-duplex backpressure flow control
 - Plug and play
 - 32 Gbps non-blocking wire-speed forwarding backplane bandwidth
 - 4 Mb large buffer design
 - With 13-inch body design, and support desktop, wall and rack mounting
-

Main Features



Small & Compact Design

The body is small and compact, and the width is only half of the ordinary 13-inch device.



Easy to Install

Support multiple mounting methods, such as desktop, wall and rack.



Plug and play

Plug and play for easy networking.



Wire Speed Forwarding

The switch features wire speed forwarding of all ports.

Specifications

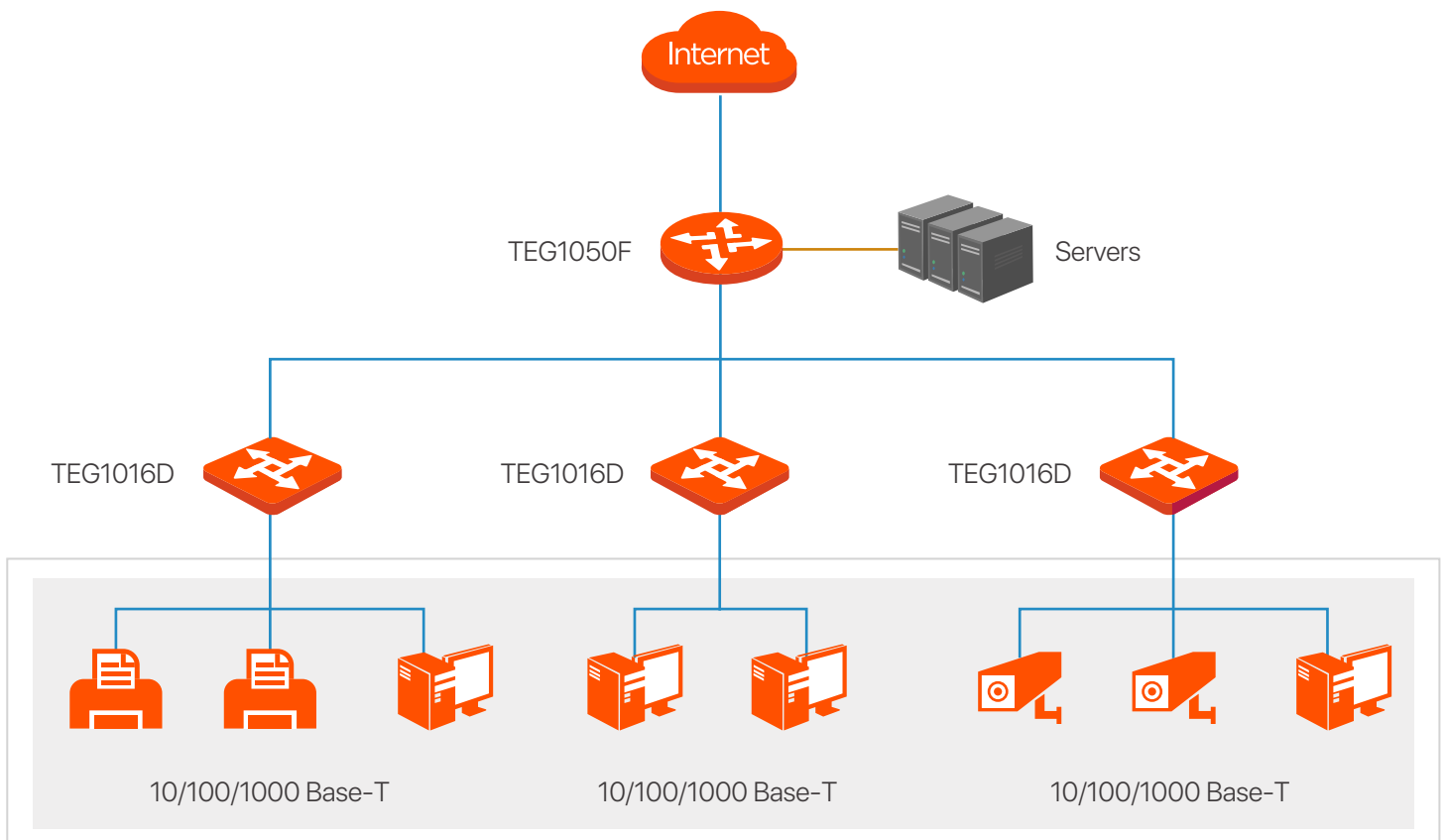
| | |
|--------------------------------|---|
| Model | TEG1016D |
| Hardware Specifications | |
| Network Standards | IEEE802.3, IEEE802.3u, IEEE802.3ab, IEEE802.3x |
| MTBF | 50,000 hours |
| LED Indicators | One Link/Act LED indicator for each port One Power LED indicator for each device |
| Ports | 16* 10/100/1000 Base-T Ethernet ports |
| Lightning Protection | ≥6KV |
| Switching Mode | Store-and-forward |
| Switching Capacity | 32Gbps |
| Forwarding Rate | 23.8Mpps |
| MAC Address Table | 8K |
| Buffer | 4 Mb |
| Input Voltage | AC: 100–240V 50/60Hz |
| Dimensions (L × W × H) | 294 mm x 120 mm x 44 mm |
| Power Consumption | <12W |
| Environment | Operating temperature: 0°C – 45°C Storage temperature: –40°C – 70°C Operating humidity: (10% – 90%)RH, non-condensing Storage humidity: (5% – 90%)RH, non-condensing |

Software Specifications

| | |
|--------------|-------------|
| Jumbo Frame | 15K |
| Certificates | FCC、CE、RoHS |

Relevant Info

- Cable
- Optical fiber



SHENZHEN TENDA TECHNOLOGY CO.,LTD.

Tenda Technology Bldg.Int'l E-City,
#1001 Zhong Shan Yuan Rd.,Nanshan District,Shenzhen China.

E-mail:support@tenda.com.cn

Tel:+86-755-2765 7098

Fax:+86-755-2765 7178

PC:518055

